

# The Paint



2,204 TOTAL SQ FT BEDROOMS: 3 BATHROOMS: 2 GARAGE: 2



## THE PAINT

TOTAL LIVING:	1,660 SQ. FT.
GARAGE:	491 SQ. FT.
COVERED ENTRY:	53 SQ. FT.
<hr/>	
TOTAL:	2,204 SQ. FT.
OPT. COVERED PORCH:	190 SQ. FT.

## FEATURES:

- Granite Countertops (in Kitchen and Bathrooms)
- Luxury Vinyl Plank Flooring (in all common areas)
- Designer Wood Cabinetry (w/soft close dovetail doors and drawers)
- Irrigation System (Lawn & Landscaping)
- Garbage Disposal
- GE Stainless Steel Appliances
- Decorative Wood Windowsills
- 30 Year Architectural Shingles
- Sherwin Williams Interior & Exterior Paints
- Brushed Nickel Finish Door Handles
- Maverick 10 Year Structural Warranty
- 1 Year Builder Warranty (Mechanical & Structural)
- Termite Prevention Treatment
- Ceiling Fan (in Master Bedroom & Living Room)



For more information:

The Deltona Corporation  
8014 SW 135<sup>th</sup> Street Road,  
Ocala, FL 34473

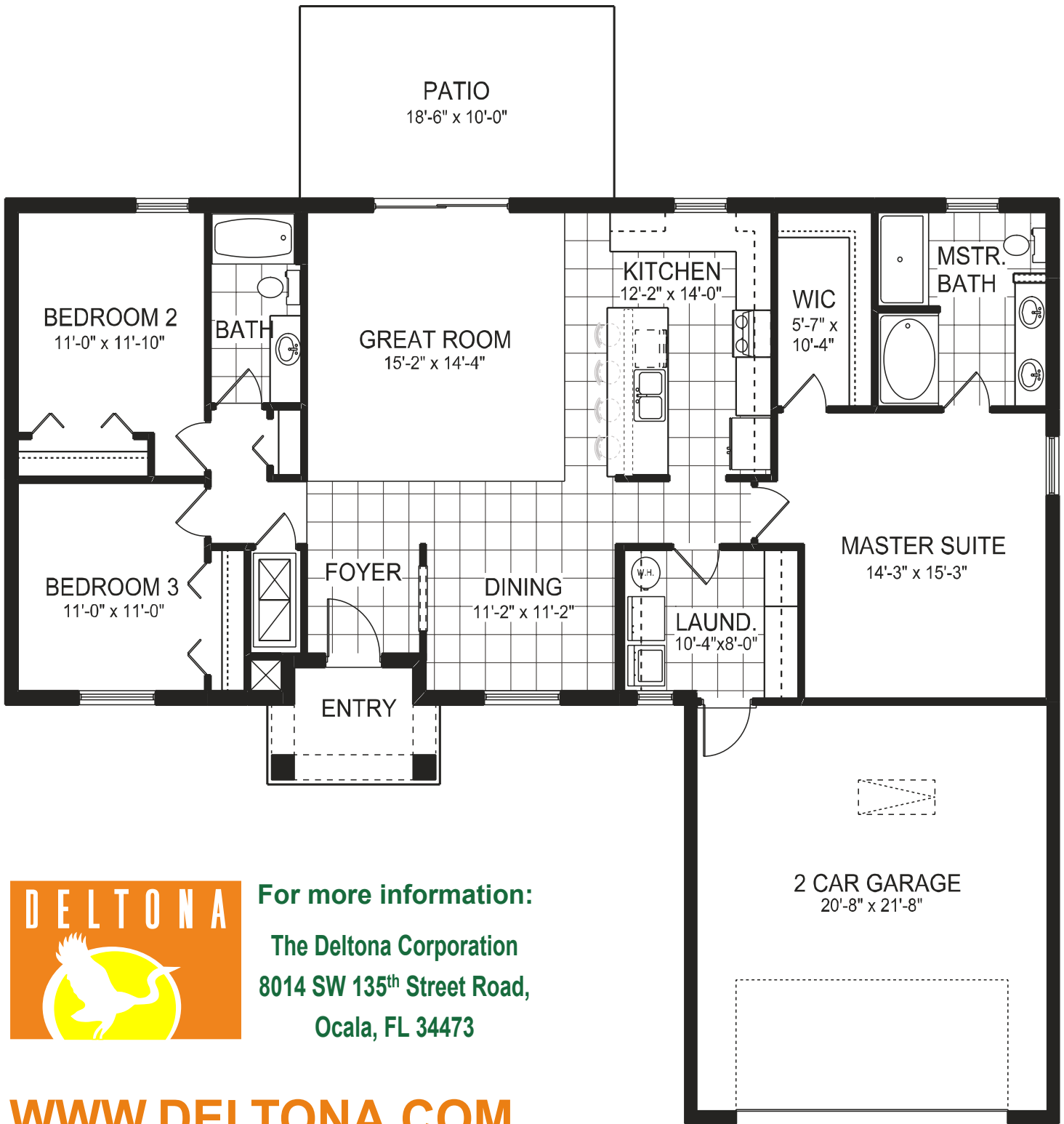
[WWW.DELTONA.COM](http://WWW.DELTONA.COM)

352-347-2322

• MARION OAKS

# The Paint

2,204 TOTAL SQ FT BEDROOMS: 3 BATHROOMS: 2 GARAGE: 2



For more information:

The Deltona Corporation  
8014 SW 135<sup>th</sup> Street Road,  
Ocala, FL 34473

[WWW.DELTONA.COM](http://WWW.DELTONA.COM)

352-347-2322 • MARION OAKS